



RIGMASTER STANDS ALONE

The Ultimate Stand-Alone Truck-Mounted APU

LG200-K : Inverter Model

Features

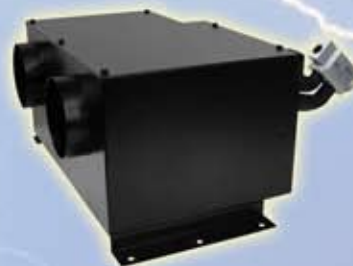
- Fully Self Contained, Stand-Alone Design
- 2 CYL, Tier 4 FINAL, EPA approved Engine (Kohler)
- Multiple Auto Start Features
- Alternator: 170 Amps For Battery Charging
- Air-Conditioning: 24,000 BTU; 600 CFM
- Heating: 13,500 BTU
- Fuel Consumption: 0.25 gal/hr (avg.)
- Large Oil Capacity: 1.24 gal (4.7 L)
- Compact HVAC Box:
12½" D x 15½" W x 8½" H



Benefits

- 360° Access to all Components
- Aluminum diamond plate cover
- Easy & Fast installation
- Ultra Quiet
- Extremely Lightweight
- Remarkably Compact
- Dimensions:
25" D x 21" W x 28" H
- Serpentine stretched-fit belt reduces maintenance
- Heat or No Heat Options
- Various mounting applications for the APU (frame rail or catwalk)

Dual-Blower HVAC Box



Scan the QR code to visit RigMaster



RigMaster... Discover the Difference!

Call us: 1-800-249-6222 • www.rigmasterpower.com



RigMaster Technical Specifications

ATTRIBUTES	 MTS-T46K	 LG200-K		
Heating	7,000 BTU – Webasto Heater 13,500 BTU – Automotive style	7,000 BTU – Webasto Heater 13,500 BTU – Automotive style		
Air Conditioning	24,000 BTU	24,000 BTU		
Air Flow (Cubic Feet/Minute)	600 CFM	600 CFM		
Alternator	60 Amps @ 12 Volts DC	Smart Alternator 170 Amps @ 12 Volts DC		
Generator Output	6000 Watts @ 120 VAC	N/A		
Inverter	N/A	Yes (Required)		
Average Fuel Consumption	0.25 gal / hr	0.25 gal / hr		
Stand-Alone Unit	Yes	Yes		
Attached Radiator	Yes	Yes		
Cylinder Engine	2 CYL Tier 4 Final Diesel (Kohler)	2 CYL Tier 4 Final Diesel (Kohler)		
Automatic Start Battery Protection	Yes	Yes		
Electric Fans	Yes	Yes		
Weight	410 lbs	335 lbs		
Additional Mounting Options	Catwalk Sub-frame: 50 lbs	Catwalk Sub-frame: 50 lbs		
Main Unit Dimensions (Inches)	Width	25 "	Width	21 "
	Height	28 ½"	Height	28 "
	Depth	25 "	Depth	25 "
HVAC Box Dimensions (Inches)	Width	15 ½ "	Width	15 ½ "
	Height	8 ½ "	Height	8 ½ "
	Depth	12 ½ "	Depth	12 ½ "