

Remote Starter

Installation & Operating Instructions

Espar Products, Inc.

6099AVipond Drive
Mississauga, Ontario
Canada L5T 2B2

(905) 670-0960 Canada

(905) 670-0728 Fax

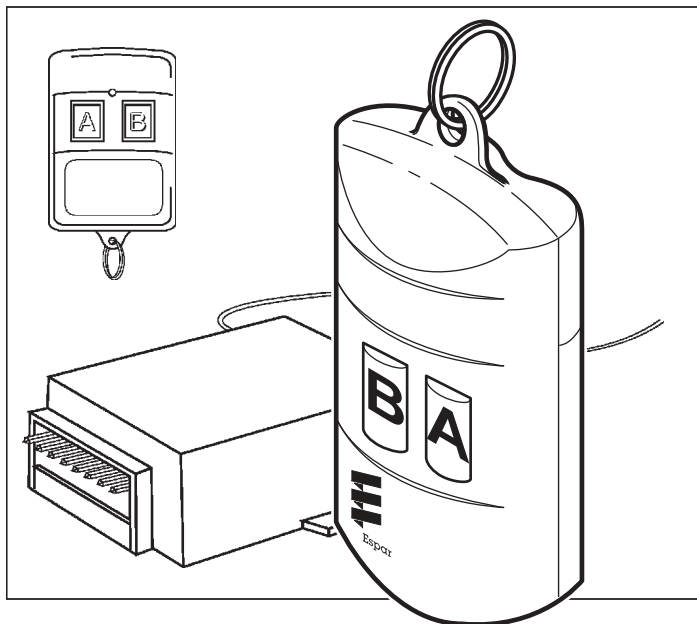
(800) 387-4800 Canada & U.S.A.

www.espar.com

A member of the Worldwide
Eberspächer Group of Companies

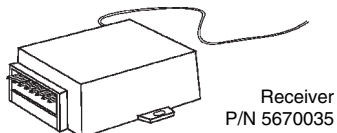
Remote Starter Kit 12 Volt: P/N 20 2900 70 01 50

Remote Starter Kit 12 Volt: P/N 20 2900 70 01 56



Installation Instructions

The remote starter has been introduced to offer a simple and convenient way to turn on the heater system within 300 feet of the heater. This remote starter can be connected to the existing harness of the of the 7 day timer or to the timer directly. See schematics on inside page.

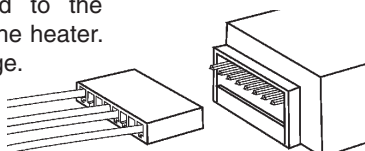


Receiver
P/N 5670035

1 Mount the receiver in a suitable place under the dash near the operating switch of the heater.

2 Run and secure the antenna as high in the vehicle as possible, keeping it away from metal surfaces.


3 Connect the harness to the receiver and connect the other end to the operating switch harness of the heater. See schematics on inside page.

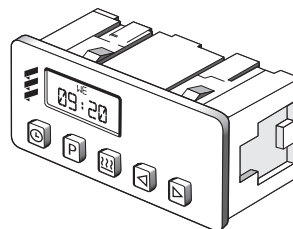


Operating Instructions

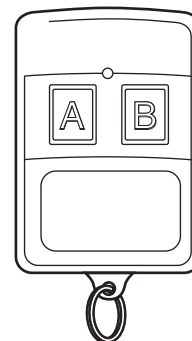
7 Day Timer

Either the "A" or "B" button will turn the heater on and/or off.

Note: After turning the heater on via remote starter, you may, at anytime turn the heater off with the off button  on the 7 day timer.



P/N 5670036
Control transmitter

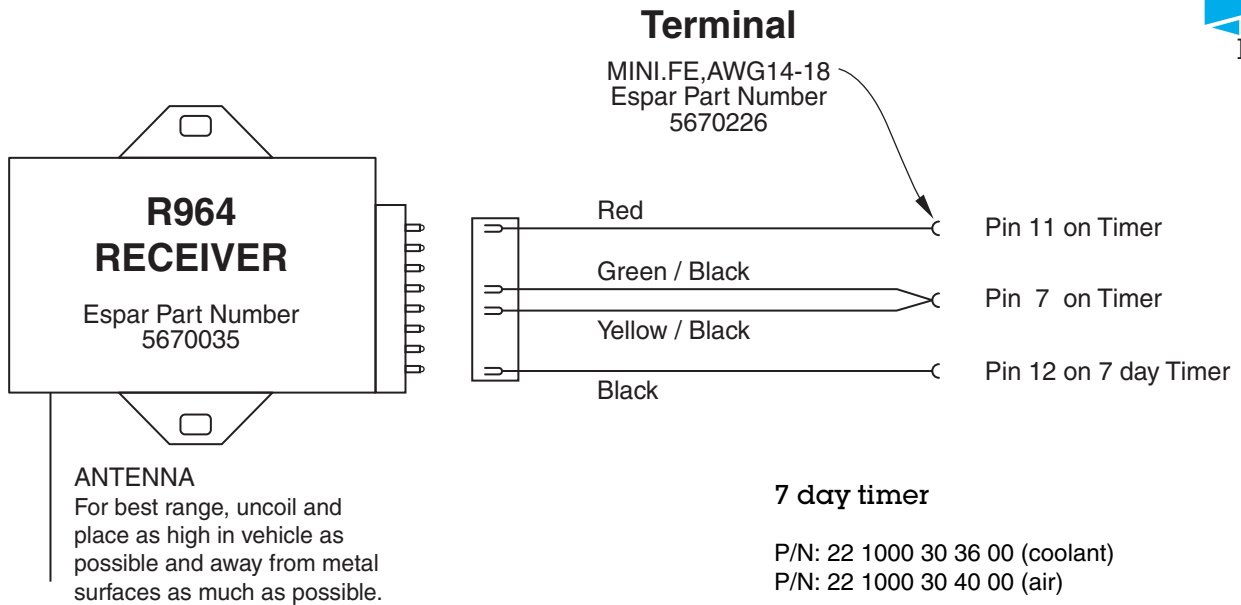


Schematics



7 Day Timer

Use remote Starter Kit 12 Volt: **P/N 20 2900 70 01 50**



7 day timer

P/N: 22 1000 30 36 00 (coolant)

P/N: 22 1000 30 40 00 (air)

Remote A - green wire — pin 7 on timer

Remote B - yellow wire —

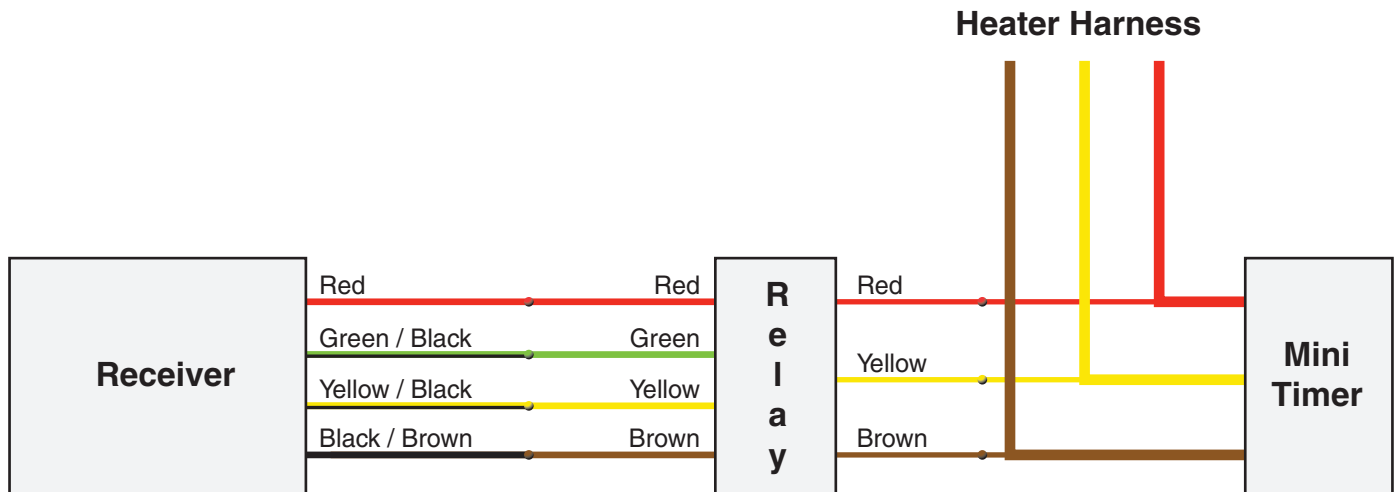
Power - red wire pin 11 on timer

Ground - black wire pin 4 or pin 12 on timer

Warning: Disconnect heater's harness, from battery prior to making electrical connections

Programmable Timer, Mini Timer, Thermostat & Rheostat

Use remote Starter Kit 12 Volt: **P/N 20 2900 70 01 56**



1. Remove fuses on heater's harness or disconnect from battery.
2. Connect four wires between relay and receiver as shown.
3. Connect three wires from relay to harness:
 - Red wire to fused red wire on heater's harness going to control device.
 - Brown wire to negative wire on heater's harness (do not ground to chassis if vehicle has switch on battery "-")
 - Yellow wire of relay to yellow wire on heater's harness.
3. Replace fuses.